

Aqua2use

"The Answer for Greywater Reuse"



1. Reduce the Water Bill.

2. Take off load from septic.

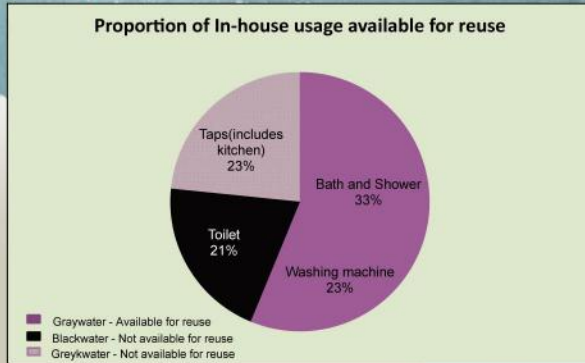
3. Keep Garden Green.

4. Potable water saving; water for all.

5. Energy Saving on water transport.

6. Sustainable living.

1. Reduce the Water Bill.



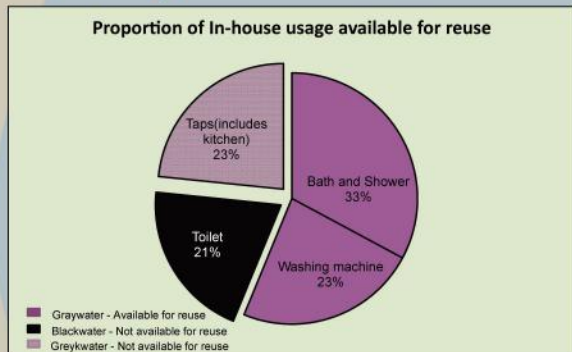
Data source : : Australia NSW Department of Energy, Utilities and Sustainability, 2003



Aqua2use



Water Bill



Data source : : Australia NSW Department of Energy, Utilities and Sustainability, 2003

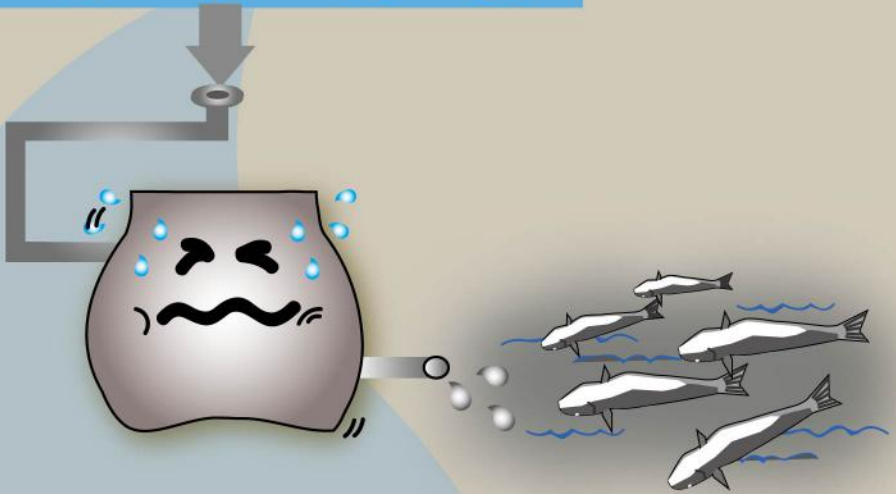


Save average of
56% indoor water usage.



Water Bill

2. Take off load from septic.



Aqua2use

3. Keep Garden Green.



Sewage



Aqua2use



4. Potable water saving; water for all.



Aqua2use

➔ Sustainability

5. Energy Saving on water transport.



6. Sustainable living.

Aqua2use

"The Answer for Greywater Reuse"

ACT NOW !



> Step 1 Collect

The Aqua2use GWDD diverts water from the laundry, bath and shower



> Step 2 Filter

Aqua2use GWDD's state of art filter mats offer the best filtration available for grey water



> Step 3 Flourish

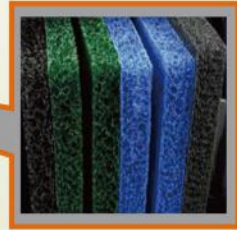
The subsurface dripline system delivers a slow and precise application of greywater throughout the garden. See Watering the garden section overleaf for more information



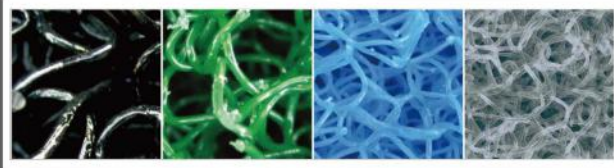
Matala 3D Progressive Filtration : Technology Proved in more than 40 countries



Solid removal : up to 75% for pump operated unit, 90% for gravity unit



Greywater
IN

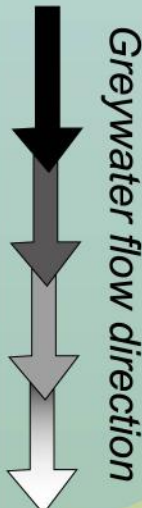


Filtered water
for Lawn &
garden

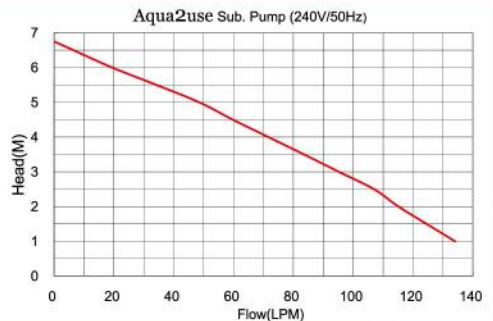
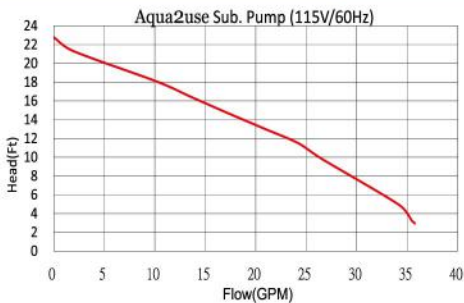
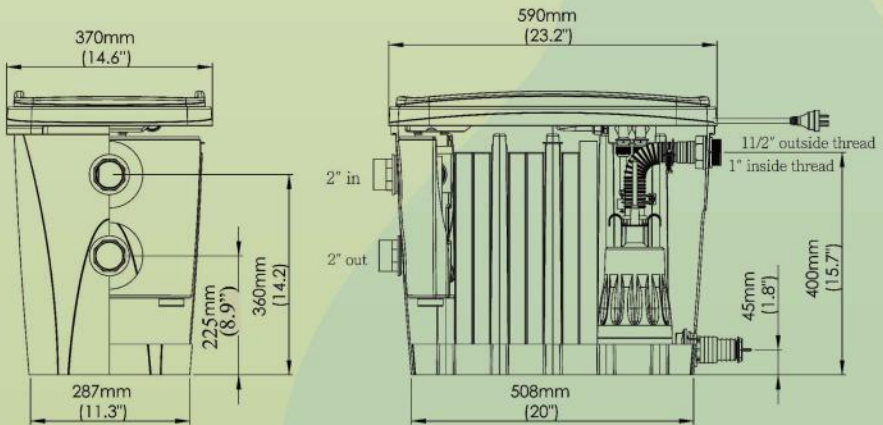
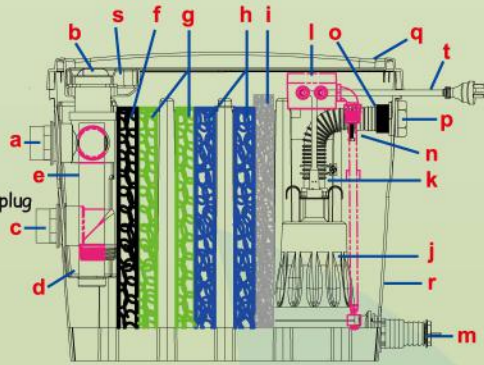
Unit tested in a Trailer Park, Australia:

Matala greywater diverter checked after filtering 40,000L (10,567gallons)
incoming greywater :public shower rooms and laundry

The pictures prove the high filtration efficiency, achieved with progressive density Matala filter sheets. The filter can take up a huge volume of hair, lint, sand, soap residus ect.....



- a. inlet(2")
- b. Diverting valve
- c. Outlet to sewer (2")
- d. basket
- e. Overflow stand pipe
- f. Matala FSM190, Black
- g. Matala FSM290, Green
- h. Matala FSM365, Blue
- i. Matala FSM460, Grey
- j. water pump
- k. pump outlet
- l. electronic pump controller
- m. drain/clean out point with 1" plug
- n. kinkfree hose + hose clamp
- o. outlet connector
- p. outlet
- q. tank cover
- r. tank
- s. inlet cover
- t. electrical pump lead





Aqua2use

"The Answer for Greywater Reuse"



Aqua2use

"The Answer for Greywater Reuse"

www.aqua2use.com

